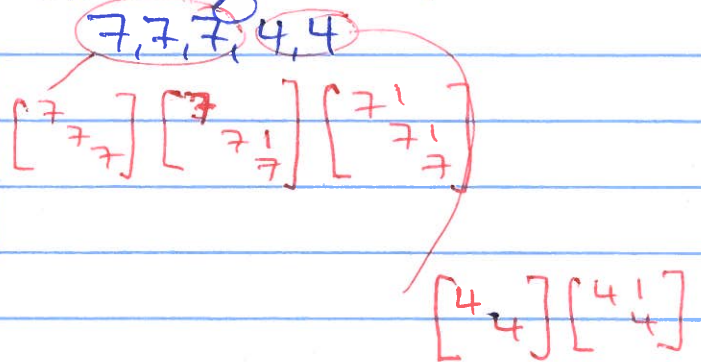
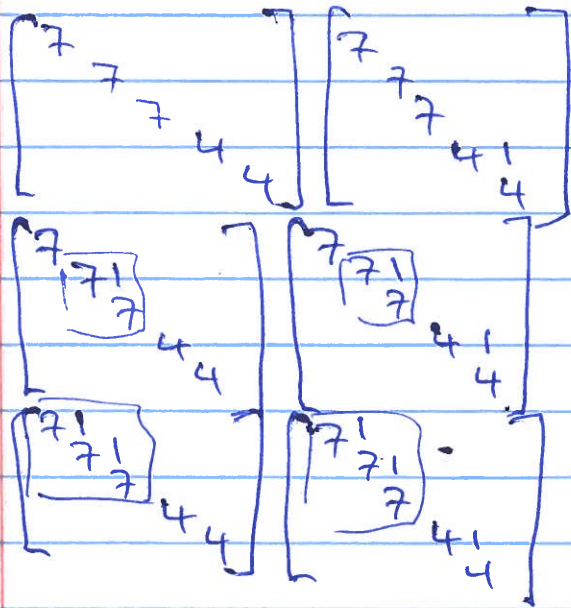


EG What are the possible JNFs for a 5×5 matrix with eigenvalues



total # of possibilities
 $= 3 \cdot 2 = 6$

EG How many different JNFs?

(a) 6×6 matrix with eigenvalues $\underbrace{3, 3}_2, \underbrace{7, 7, 7, 7}_4$
 $2 \cdot 5 = 10$ JNFs # = 2 # = 5

(b) 11×11 matrix with eigenvalues $\underbrace{1, 1, 1}_3, \underbrace{2, 2, 2, 2}_4, \underbrace{4, 4, 4}_4$
 $3 \cdot 5 \cdot 5 = 75$ JNFs # = 3 # = 5 # = 5